

# YGE 60 CELL SERIES

YL270P-29b  
YL265P-29b  
YL260P-29b  
YL255P-29b  
YL250P-29b



## QUALITY MEETS VERSATILITY IN OUR FLAGSHIP MODULE

From residential and commercial rooftops to ground-mounted solar farms, the YGE 60 Cell Series, our most popular product line, is trusted by hundreds of thousands of project owners worldwide.

16.6%

MAXIMUM EFFICIENCY

25 YEAR

LINEAR POWER WARRANTY

0 / +3%

POWER TOLERANCE



### Long-Term Durability

Independent tests validate Yingli modules' resistance to adverse environmental factors such as salt mist, ammonia, and blowing sand.



### More Energy per Watt

From hot climates to low-light conditions, Yingli modules deliver superior energy yield in a wide range of temperatures and irradiances.



### Global Scale

As one of the world's largest solar module manufacturers, Yingli has deployed over 14 GW of solar modules worldwide and supplied nearly 100,000 projects in the Americas.



### Local Support

Yingli's dedicated local team provides comprehensive customer service through regional headquarters in New York and San Francisco.

### Warranty Information

Ten-year limited product warranty. Industry leading 25-year performance warranty adds value by guaranteeing power output on an annual basis, in compliance with our warranty terms and conditions.

### Performance Modeling

For those interested in obtaining performance modeling files for system energy yield simulation, please contact Yingli at [simulation@yingliamericas.com](mailto:simulation@yingliamericas.com).

### Qualifications & Certificates

CEC, FSEC, ISO 9001:2008, ISO 14001:2004, BS OHSAS 18001:2007, SA8000, UL 1703

## ELECTRICAL PERFORMANCE

### Electrical parameters at Standard Test Conditions (STC)

Module type			YL270P-29b	YL265P-29b	YL260P-29b	YL255P-29b	YL250P-29b
Power output	$P_{max}$	W	270	265	260	255	250
Power output tolerances	$\Delta P_{max}$	%			0 / +3		
Module efficiency	$\eta_m$	%	16.6	16.3	16.0	15.7	15.4
Voltage at $P_{max}$	$V_{mpp}$	V	30.7	30.5	30.3	30.0	29.8
Current at $P_{max}$	$I_{mpp}$	A	8.80	8.70	8.59	8.49	8.39
Open-circuit voltage	$V_{oc}$	V	37.9	37.8	37.7	37.7	37.6
Short-circuit current	$I_{sc}$	A	9.27	9.18	9.09	9.01	8.92

STC: 1000W/m<sup>2</sup> irradiance, 25°C cell temperature, AM 1.5G spectrum according to EN 60904-3.

### Electrical parameters at Nominal Operating Cell Temperature (NOCT)

Power output	$P_{max}$	W	196.9	193.3	189.7	186.0	182.4
Voltage at $P_{max}$	$V_{mpp}$	V	28.0	27.8	27.6	27.4	27.2
Current at $P_{max}$	$I_{mpp}$	A	7.04	6.96	6.87	6.79	6.71
Open-circuit voltage	$V_{oc}$	V	35.0	34.9	34.8	34.8	34.7
Short-circuit current	$I_{sc}$	A	7.49	7.42	7.35	7.28	7.21

NOCT: open-circuit module operation temperature at 800W/m<sup>2</sup> irradiance, 20°C ambient temperature, 1m/s wind speed.

## THERMAL CHARACTERISTICS

Temperature coefficient of $P_{max}$	%/°C	-0.42
Temperature coefficient of $V_{oc}$	%/°C	-0.32
Temperature coefficient of $I_{sc}$	%/°C	0.05

## OPERATING CONDITIONS

Max. system voltage	1000V <sub>DC</sub>
Max. series fuse rating	15A
Limiting reverse current	15A
Operating temperature range	-40 to 185°F (-40 to 85°C)
Max. hailstone impact (diameter / velocity)	25mm / 23m/s

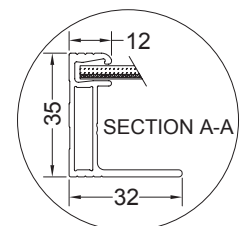
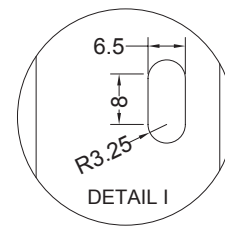
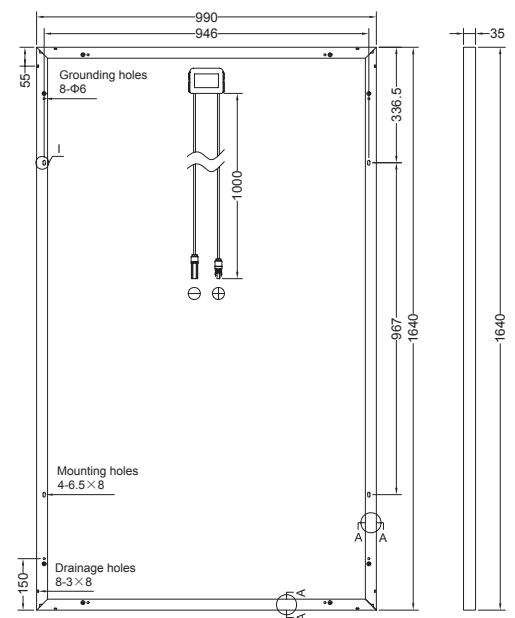
## CONSTRUCTION MATERIALS

Front cover (material / thickness)	low-iron tempered glass / 3.2mm
Cell (quantity / material / dimensions / number of busbars)	60 / multicrystalline silicon / 156mm x 156mm / 3 or 4
Encapsulant (material)	ethylene vinyl acetate (EVA)
Frame (material / color)	anodized aluminum / silver or black
Junction box (ingress protection rating)	≥ IP65
Cable (length / cross-sectional area)	1000mm / 4mm <sup>2</sup>
Connector (type / ingress protection rating)	MC4 / IP67 or Amphenol H4 / IP68

## GENERAL CHARACTERISTICS

Module dimensions (L / W / H)	64.57in (1640mm) / 38.98in (990mm) / 1.38in (35mm)
Module weight	40.8lbs (18.5kg)
Number of modules per pallet	30
Number of pallets per 40' container	28
Packaging box dimensions (L / W / H)	67in (1700mm) / 45in (1135mm) / 46in (1165mm)
Packaging box weight	1296lbs (588kg)
Fire classification type	Type 1 and Type 2

Units: inch (mm)



Warning: Read the Installation and User Manual in its entirety before handling, installing, and operating Yingli modules.

Yingli Green Energy Americas, Inc.

info@yingliamericas.com

Tel: +1 (888) 686-8820

**YINGLISOLAR.COM** | NYSE:YGE

© Yingli Green Energy Holding Co. Ltd. | YGE60CellSeries\_US\_201602\_V02

Yingli, Yingli Solar and the Yingli Logo are trademarks/registered trademarks of Yingli Energy (China) Company Ltd. Corp./its affiliated companies in the U.S. and elsewhere. All rights reserved. The specifications in this datasheet are not guaranteed and are subject to change without prior notice.

